

lacade
fashion | culture | design

X

PRILAKA
FOUNDATION

art

ART JAKARTA
4 — 6 OCT 2024
JIEXPO KEMAYORAN

Artist:
Wahyadi Liem

Booth A21



— facade —

Since 2018, Facade has acted upon its desire to display the great potential of Indonesian emerging artists on the national and international stages. With her decades of experience in dealing with the world of art, as well as being a connoisseur and observer; Listia Prajoga has developed her own unique sense of sensitivity and skills in identifying the hidden potentials of young and emerging artists.

Facade's primary aim in this event is for the democratisation of fine art; and to make it possible for a broader range of audience to afford, collect and, appreciate works of art.



All proceeds from these sculptures go to the Pipilaka Foundation, a nonprofit organization with a mission to raise funds for charitable causes through the power of art. The foundation hosts cultural and educational events, ranging from concerts to theater, always ensuring the projects are fun and entertaining.

Pipilaka aims to raise awareness of global issues, not through preaching or judgment, but by highlighting them in a creative and engaging way. The name "Pipilaka", which means ants in Sanskrit, embodies the philosophy of collective effort. Like ants, the foundation believes in the strength of community, collaboration, and mutual care. This philosophy resonates in every project and sculpture, encouraging individuals to realize that the world's problems originate from us, and therefore, we have the power to solve them together.

THE SERIES

This unique sculpture series is inspired by the harmony of nature and animals, drawing from various natural elements such as tree branches, leaves, grass, sand, coral, shells, and clouds. Each character is carefully designed to reflect an abstract fusion of nature's beauty, portraying not only animals but also the fluid, organic forms of natural surroundings. With about 30 different characters in the collection, each sculpture embodies a deep respect for the environment, promoting ecological balance and sustainability.

PROCESS OF CREATION

The sculptures are crafted using recycled aluminum and bronze, embracing an eco-friendly approach to art. The process begins with a traditional method of creating clay molds. Water, wind, and clay are combined to form the initial shape, dried naturally through air exposure. Once the mold is ready, the recycled metals are melted using fire and heat, poured into the mold to create the final sculpture.

The aging process of the sculptures is where true artistry shines. Copper and bronze residues are steeped in water for weeks, allowing them to rust naturally. This rusty water is then sprayed and burned into the sculpture, giving it a distinctive antique patina that makes each piece unique.



THE ARTWORKS

Introducing the Pipilaka Sculpture Collection a unique and ecologically conscious series of 30 characters inspired by the beauty of nature and animals. Crafted from recycled aluminum and bronze using traditional clay molds and an organic aging process, each sculpture is a celebration of environmental preservation.

Proceeds from this collection support the charitable initiatives of the Pipilaka Foundation, a nonprofit dedicated to raising awareness of global issues through art, without judgment. Embracing the philosophy of the ant, Pipilaka believes in collective strength and the importance of taking care of one another. Join us in supporting a meaningful cause while enjoying the beauty of nature captured in these timeless sculptures.



Wahyadi Liem
"Golden Zuri"
Bronze, 120 x 59 x 53
2024



Wahyadi Liem
"Dark Zuri"
Bronze, 120 x 59 x 53
2024





Wahyadi Liem

"Aurani"

Bronze, 90 x 43x 63

2024



Wahyadi Liem

“Stornu”

Aluminium, 50 x 35 x 27

2024

Wahyadi Liem
“Dorrion”
Aluminium, 40 x 21 x 22
2024





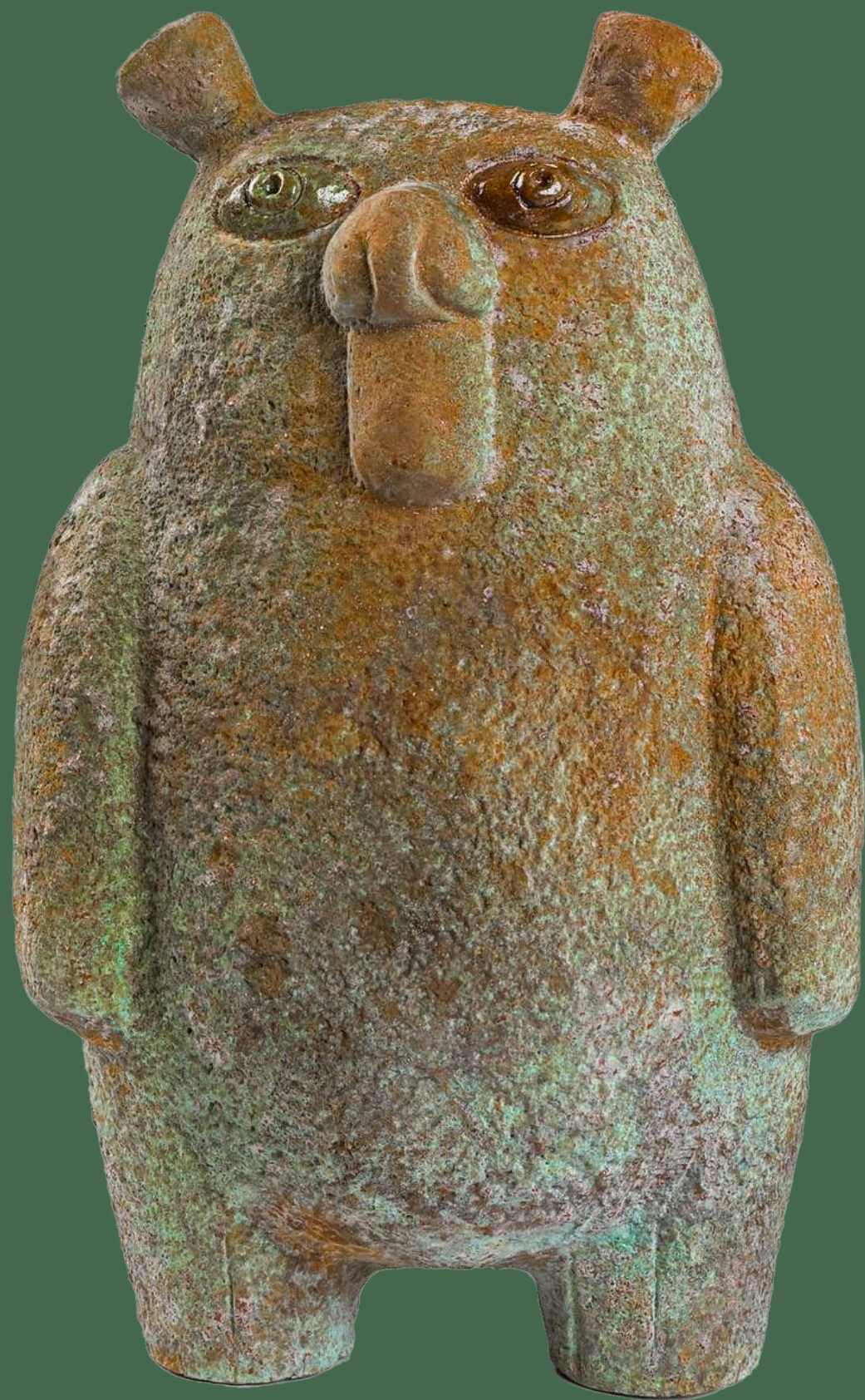
Wahyadi Liem
"Timberpea"
Aluminium, 40 x 22 x 27
2024



Wahyadi Liem
“Granite Gazer”
Aluminium, 30 x 14 x 13.5
2024



Wahyadi Liem
“Watcher Woods”
Aluminium, 30 x 15 x 13.5
2024



Wahyadi Liem
“Mosbelly Grump”
Aluminium, 30 x 20 x 13.5
2024



Wahyadi Liem

"Prickle Puff"

Aluminium, 20 x 14 x 10.5

2024



Wahyadi Liem
“Grizzle Hoot”
Aluminium, 20 x 14 x 10.5
2024



Wahyadi Liem
“Twilight Whisk”
Aluminium, 20 x 14 x 10.5
2024



Wahyadi Liem

"Spike Owl"

Aluminium, 20 x 14 x 10.5

2024





Wahyadi Liem
“Silent Guardian”
Aluminium, 20 x 14 x 10.5
2024



facade

fashion | culture | design



PRIAKA
FOUNDATION

Pejaten Barat Raya no. 9 | Jakarta 12510, Indonesia
facadelistia@gmail.com | +62 85179754376